



# Goulburn Broken Catchment Community Natural Resource Management 2016/17 Report Card

Welcome to the 2016/17 Community Natural Resource Management Report Card. The report is compiled by the Goulburn Broken Catchment Management Authority on behalf of the community, to describe all of the great work undertaken by the region's volunteer based environment and sustainable farming groups. The information is gathered using a voluntary annual survey. This year 68 of the 108 (63%) known groups provided the data that informs the achievements and highlights detailed in this report.

## The Catchment at a Glance

**96 groups**  
**12 networks**  
5 Conservation Management  
7 Landcare  
**5,089 members**  
**5,640 volunteers**  
**37,184 hours of donated time**  
Equating to over \$1.1m of in-kind labour  
**\$1.22m project funding**



## Key Outputs

Our community NRM groups pride themselves on their ability to get the job done and in 2016/17 they once again completed an amazing amount of on-ground works.



**Revegetation**  
457.75 Ha



**Weed Control**  
5,683 Ha



**Remnant Vegetation Protection**  
424.4 Ha



**Fox Control**  
3,015 Ha



**Rabbit Control**  
3,107 Ha



**Fencing**  
54.7 Km

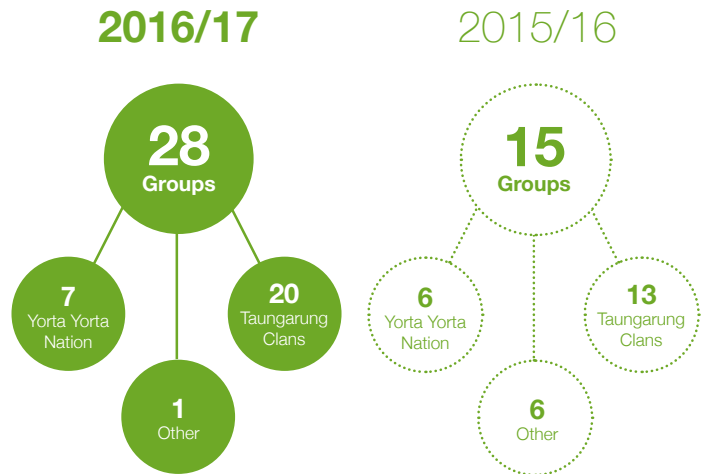


**Nest Boxes**  
1,912



## Traditional Owner Engagement

Taungurung Clans and Yorta Yorta Nation are the two Registered Aboriginal Parties (RAPs) that operate in the Goulburn Broken Catchment. Our Community NRM groups are committed to working with RAPs in the delivery of projects and in 2016/17 there has once again been a strong level of engagement. The number of groups engaging with RAPs in 2016/17 has increased with a big rise (35%) in the number of groups engaging with Taungurung Clans compared to 2015/16 level.



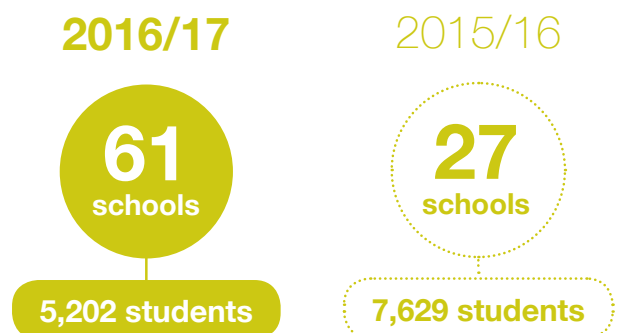
## Capacity Building Events

Our Community NRM groups continue to drive the delivery of tailored information to our land managers through a variety of events and activities. Local priorities and need inform both the content and delivery methods.



## Schools Engaged

Investing in the knowledge of our next generation of land managers is a vital role of the region's community NRM groups. We have some very strong networks operating in this space and in 2016/17 they have engaged over 5,202 students. The decrease in total number of students engaged this past year, despite the increase in the number of schools, suggests that our groups and networks are working with the smaller rural community schools.





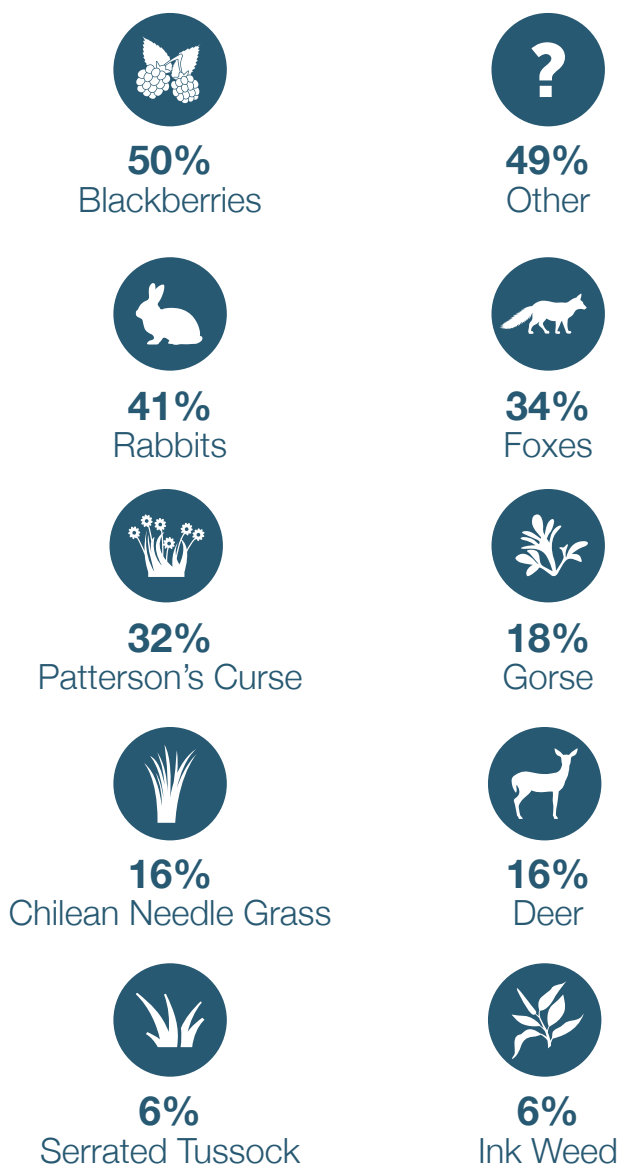
## Future Issues Facing Community NRM

The Community NRM groups of the Goulburn Broken CMA region rate the following as the greatest challenges over the coming 5 years. (Ranked on a scale from 0-5)



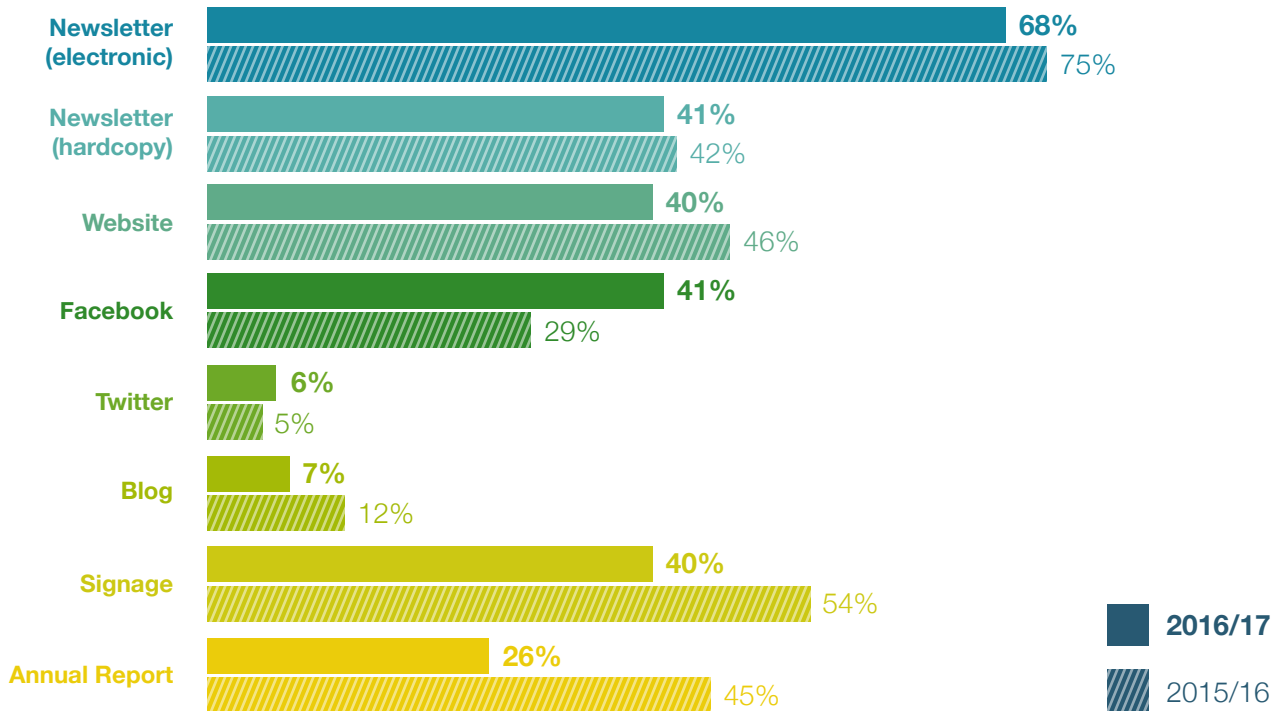
## Pest Plant and Animal Priorities

Targeting pest plants and animals is a priority for our Community NRM groups now and into the future. Groups were asked to list the pest plant and animal species that they needed to work on over the coming year. The increase in the importance community place on controlling Patterson's curse and deer is noticeable as is the "other" category suggesting that it is local pest species that need to be worked on as well as state-wide priorities of blackberries, rabbits and foxes.





## How Our Groups Communicate



This survey is voluntary.

Many thanks to the 68 groups (63% of the total number of groups in the region) who took the time to respond this year.

The Goulburn Broken CMA actively supports Landcare and other NRM groups through the employment of the Regional Landcare Coordinator and Regional Landcare Facilitator (funded through the Australian Government's National Landcare Program).

### Regional Landcare Coordinator

Tony Kubeil  
89 Sydney Rd, Benalla  
Tel. 0408 597 213

### Regional Landcare Facilitator

Ashley Rogers  
89 Sydney Rd, Benalla  
Tel. (03) 5764 7507

To find out more about Landcare in the Goulburn Broken catchment you can go to either of these websites:

[www.landcarevic.net.au](http://www.landcarevic.net.au) or [www.gbcma.vic.gov.au](http://www.gbcma.vic.gov.au)

