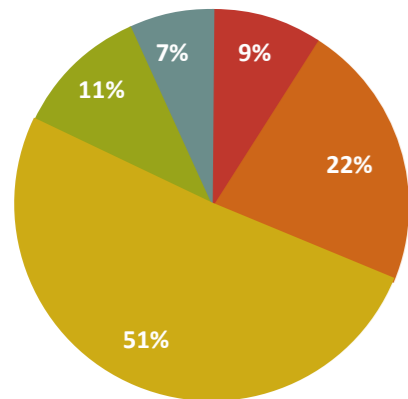


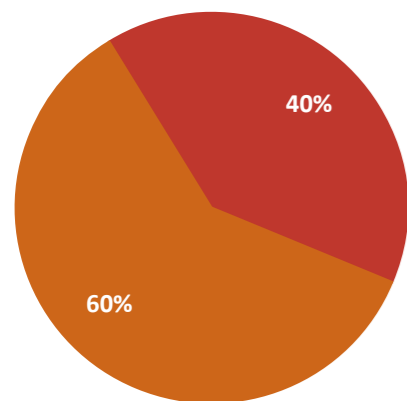
Highlights

- 487 people contributed 2,828hrs to control weeds across 84,097ha of the Goulburn Broken catchment.
- 85 people contributed 1,468hrs to control pest animals across 84,097ha of the Goulburn Broken catchment.
- 140Ha of revegetation was delivered with the assistance of 1,320 people and 4,024hrs of their time
- Our community groups and networks employed 6.7 FTE staff to assist in the support of Landcare and delivery of projects.
- 1,241 people attended 27 field days delivered by our Community NRM groups and networks.

Group Health



Network Health



- Trail blazers
- Rolling along smoothly
- Moving forward
- Struggling along with the same dedicated core
- Just hanging on

Groups:

Groups:	Members
Gecko CLaN (60% Response)	
Burnt Creek Landcare Group	120
Euroa Arboretum	80
Euroa Environment Group	37
Gooram Landcare Group	135
Graytown-Costerfield Landcare group	Not Supplied
Longwood East Landcare Group	35
Molyullah Tatong Landcare Group	35
Sheep Pen Creek Land Management Group	52
Strathbogie Tableland Landcare Group	50
Swanpool Landcare Group	31
Warby Range Landcare Group	140
Warrenbayne Boho Landcare Group	52
Yarrowonga Urban Landcare Group	15
Balmattum Sheens Creek Landcare Group	30
Goomalibee Landcare Group	16
Nagambie Landcare Group	52

Goulburn Murray Landcare Network (35% Response)	
Arcadia and District	72
Bunbartha Kaarimba District Landcare Group	15
Girgarre/Stanhope Landcare Group	10
Goulburn Valley Tree Group	19
Katandra West Landcare Group	6
Koyuga Kanyapella Landcare Group	12
Undera Landcare Group	15
Echuca Landcare Group	17
Kyabram Urban Landcare Group	21
Strathallan Landcare Group	25
Wyuna Landcare Group	22
Cornella Implementation Committee	Not Supplied
Dhurringile & District Landcare Group	44

Hughes Creek Catchment Collaborative (0% Response)	
South West Goulburn Landcare Network (100% Response)	
Glenaroua Land Management Group	42
Nullavale Pyalong West Landcare Group	Not Supplied
Sunday Creek Dry Creek	37
Willowmavin Landcare Group	18
Reedy Creek Landcare Group	30
Tallarook Landcare Group	30

Upper Goulburn Landcare Network (60% Response)	
Flowerdale Environmental Work Engine	Not Supplied
Kinglake Landcare Group	22
Merton Landcare Group	53
Mt Pleasant Reserve Committee	12
Strath Creek Landcare Group	64
UT Creek Maintongoon Landcare Group	12
Yea River Catchment Group	42
Yea Wetlands Committee	70
Molesworth Rail Park Committee	30

Up2Us Landcare Alliance (100% Response)	
Ancona Valley Landcare Group	30
Delatite Landcare Group	Not Supplied
Howqua Valley Landcare group	31
Upper Broken River Landcare Group	31

Networks:

Networks (91% Response)	
Broken Boosey CMN	560
Whroo Goldfields CMN	130
South West Goulburn Landcare Network	Not Supplied
Broken Catchment Landcare Network	Not Supplied
Lower Goulburn CMN	60
Up2Us Landcare	9
Strathbogie Ranges CMN	12
Hughes Creek Catchment Collaborative	255
Upper Goulburn Landcare Network	24

Survey Participation



**GOULBURN
BROKEN**
CATCHMENT
MANAGEMENT
AUTHORITY



Goulburn Broken Community Natural Resource Management

Annual Report 2010-11

This is the fourth annual Goulburn Broken Community Natural Resource Management (NRM) report card. This report provides stakeholders, investors and the NRM community an overview of its achievements over a 12 month period.

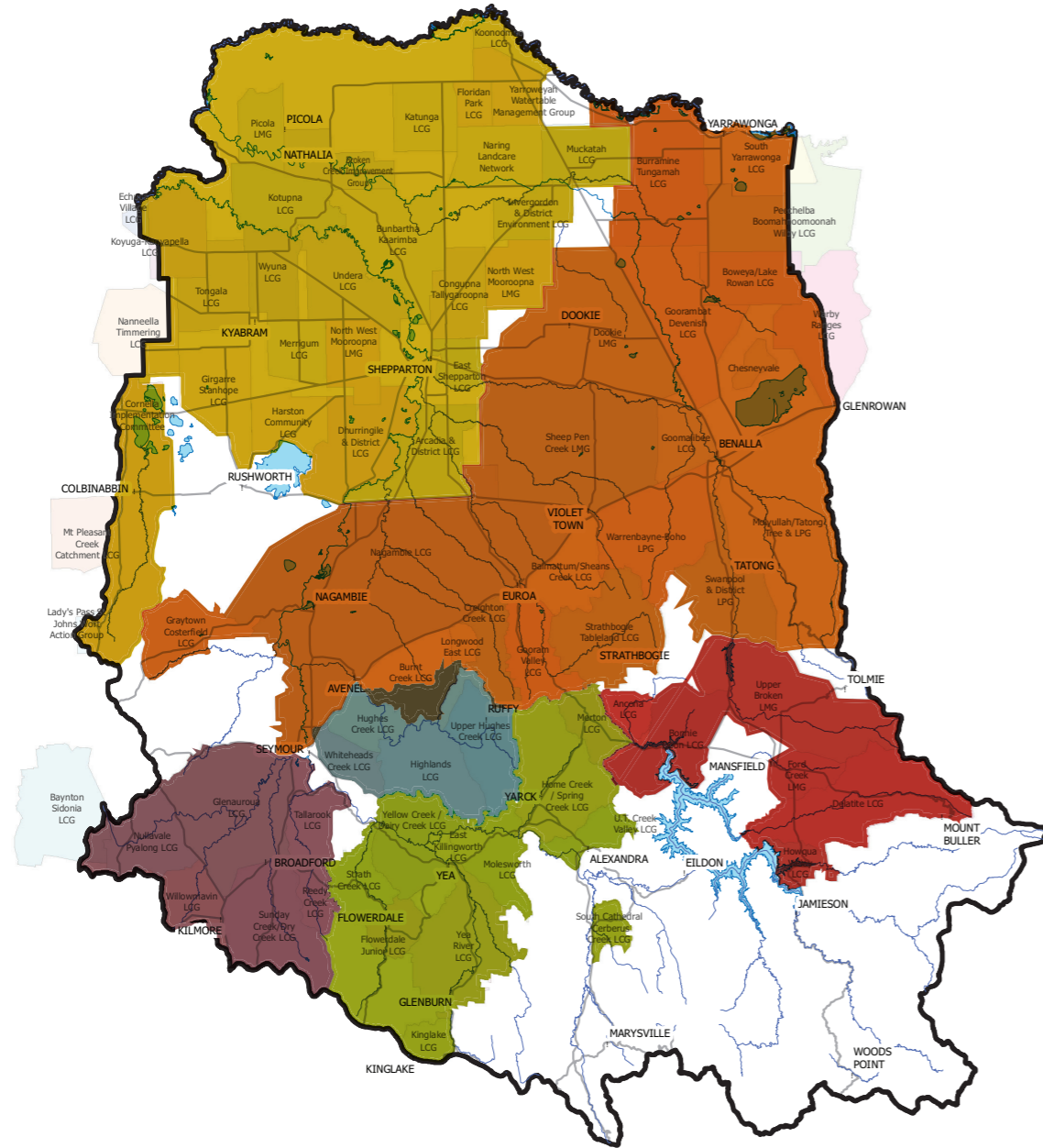
Response to the survey is voluntary, this year 47 of our 91 groups (52%) and 10 of our 11 networks (91%) contributed information.

In 2010-11 the Goulburn Broken Catchment Management Authority (CMA) made a conscious decision to make the most of the services that Landcare has to offer, and incorporated Landcare support into the delivery of individual agency projects. This service delivery committed \$416,600 to be invested in the employment of 3.9 FTE facilitators across 6 Landcare networks. As a result of this investment, the networks and their affiliated groups were able to leverage a further \$1.872 million dollars to deliver a substantial on-ground works and education program.



Our Community Natural Resource Management Networks

Landcare Groups and Networks



Conservation Management Networks



Goulburn Murray Landcare Network
Number of groups: 40
Staff: 0.4
\$ Leveraged: Not Supplied
Highlights: Not Supplied

Gecko CLaN
Number of groups: 25
Staff: 1.5
\$ Leveraged: \$224,244
Highlights: <ul style="list-style-type: none"> Pasture cropping project 3.1km riparian fencing

Up2Us Landcare Alliance
Number of groups: 4
Staff: 0.6
\$ Leveraged: \$93,750
Highlights: <ul style="list-style-type: none"> Community engagement at local market Successful CfoC grant

South West Goulburn Landcare Network
Number of groups: 6
Staff: 1.0
\$ Leveraged: \$391,500
Highlights: <ul style="list-style-type: none"> Delivered Farm Blitz program Continued Fire Recovery program

Hughes Creek Catchment Collaborative
Number of groups: 4
Staff: 0.4
\$ Leveraged: \$181,000
Highlights: <ul style="list-style-type: none"> Ripped 36Ha rabbit warrens 10,000 seedlings planted

Upper Goulburn Landcare Network
Number of groups: 15
Staff: 2.0
\$ Leveraged: \$580,515
Highlights: <ul style="list-style-type: none"> Delivered Fire Recovery program

Lower Goulburn Conservation Management Network
Staff: 0.2
\$ Leveraged: \$20,600
Highlights: <ul style="list-style-type: none"> 100 people attended first field day

Broken Boosey Conservation Management Network
Staff: 0.5
\$ Leveraged: \$5,000
Highlights: <ul style="list-style-type: none"> Fox control across 50,000Ha Education activities with 5,000 students

Strathbogie Ranges Conservation Management Network
Staff: 0.7
\$ Leveraged: \$369,000
Highlights: <ul style="list-style-type: none"> 100 participants at 4 field days Launch of website and blog

Whroo Goldfields Conservation Management Network
Staff: 0.5
\$ Leveraged: \$6,800
Highlights: <ul style="list-style-type: none"> Fox control across 30,000Ha Nestbox construction and monitoring project