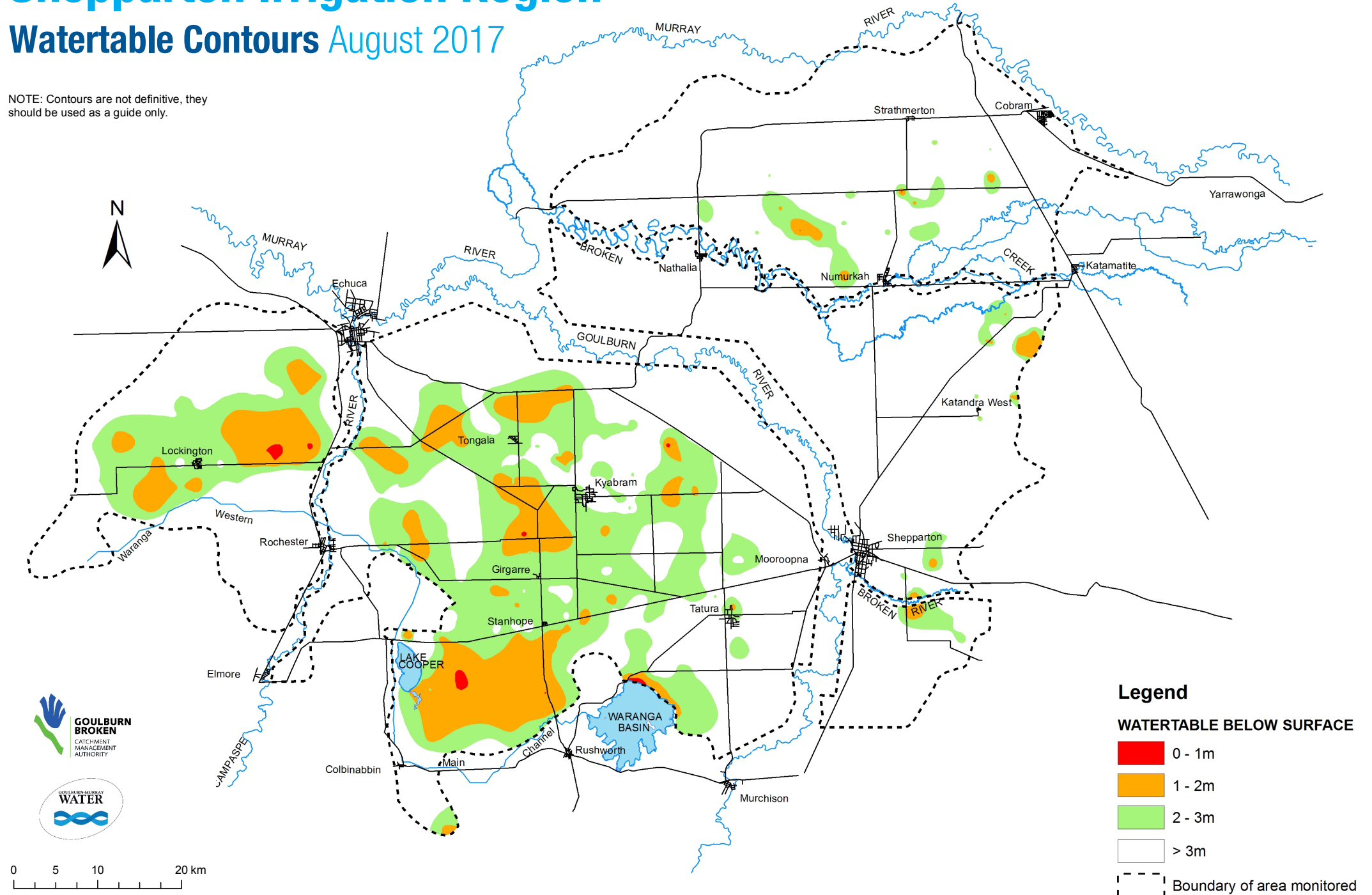


Shepparton Irrigation Region

Watertable Contours August 2017

NOTE: Contours are not definitive, they should be used as a guide only.



Legend

WATERTABLE BELOW SURFACE

0 - 1m

1 - 2m

2 - 3m

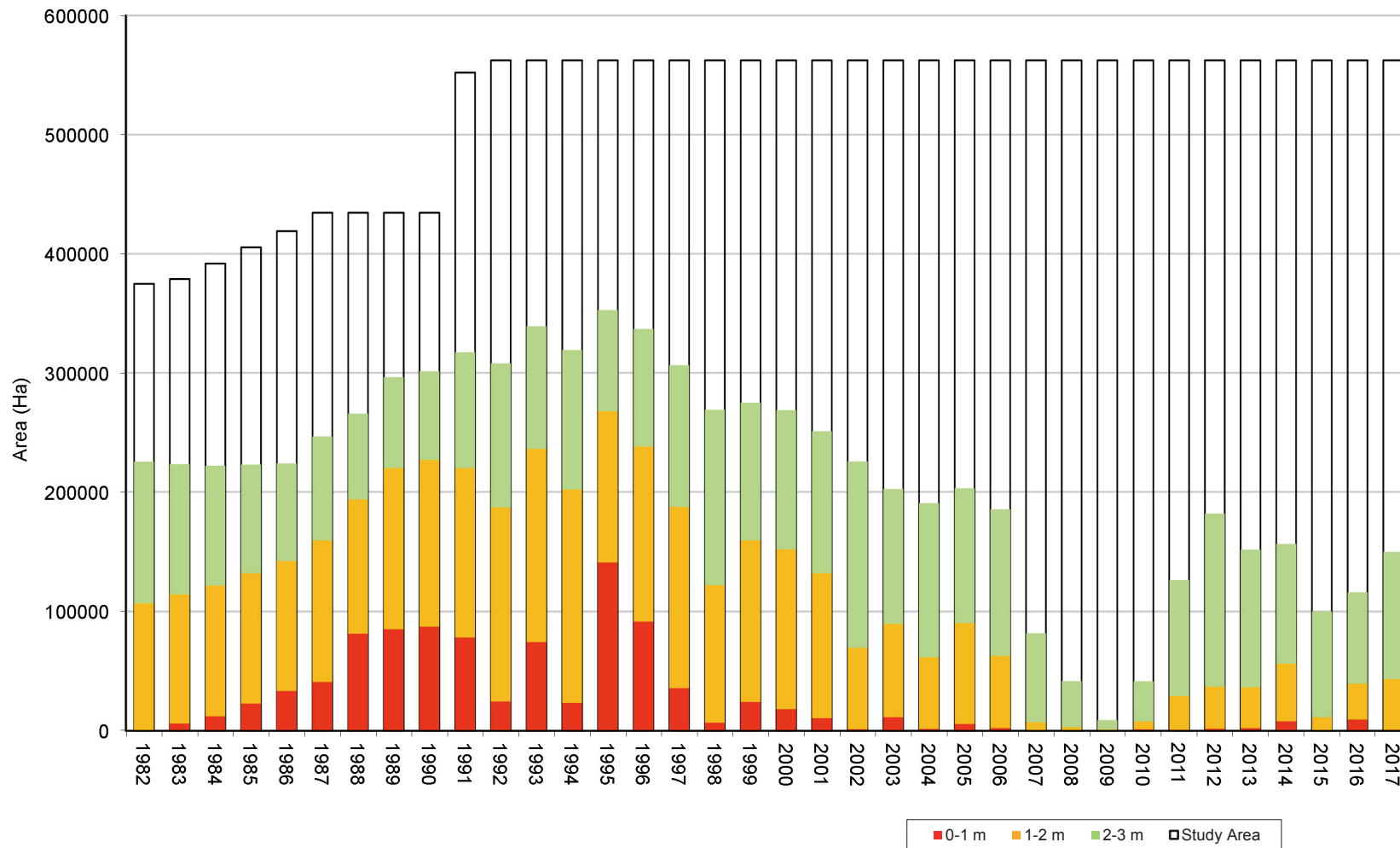
> 3m

Boundary of area monitored

0 5 10 20 km

Shepparton Irrigation Region

August Depth to Watertable Areas: 1982-2017



The Shepparton Irrigation Region Watertable Contours map (on reverse page) was produced using information from 1,000 groundwater level monitoring bores. The graph shows the total study area and a comparison of the areas of watertable at various depths from 1982 to 2017. High watertables (less than two metres below surface) and their associated salinity issues will remain a significant risk except in times of extended drought.

For further information please contact Goulburn-Murray Water on 1800 013 357.

