

Survey Participation

Group	Memberships: 2010/11	2011/12	
Goulburn Murray Landcare Network			
1 Arcadia and District	72	15	▼
2 Bunbartha Kaarimba district Landcare Group	15	26	▲
Girgarre/Stanhope Landcare Group	10		
Goulburn Valley Tree Group	19		
1 Katandra West Landcare Group	6	10	▲
Koyuga Kanyapella Landcare Group	12		
Undera Landcare Group	15		
3 Echuca Landcare Group	17	21	▲
3 Kyabram Urban Landcare Group	21	23	▲
Strathallan Landcare Group	25		
3 Wyuna Landcare Group	22	22	
Cornella Implementation Committee			
2 Dhurrigile & District landcare Group	44	40	▼
Muckatah Landcare Group		7	
2 Harston Landcare Group		15	
1 NW Mooroopna Landcare Group		20	
2 Shepparton/Mooroopna Urban Landcare Group		40	
3 Congupna Tallygaroopna Landcare Group		28	
Gecko CLaN			
4 Burnt Creek Landcare Group	120	120	
5 Euroa Arboretum	80	120	▲
Euroa Environment Group	37	-	
Gooram Valley Landcare Group	135	-	
3 Longwood East Landcare Group	35	35	
3 Molyullah Tatong Landcare Group	35	50	▲
4 Sheep Pen Creek Land Management Group	52	180	▲
3 Strathbogie Tableland Landcare Group	50	45	▼
Swanpool Landcare Group	31	-	
Warby Range Landcare Group	140	-	
3 Warrenbayne Boho Landcare Group	52	50	▼
Yarrowonga Urban Landcare Group	15		
3 Balmattum Sheens Creek landcare Group	30	20	▼
2 Goomalibee Landcare group	16	20	▲
Nagambie Landcare Group	52	-	
2 Greytown Costerfield landcare Group	-	35	▲
Dookie Land Management Group	-	-	
Creightons Creek Landcare Group	-	-	
Devenish Goorambat Landcare Group	-	-	
Minjambuta Landcare Group	-	-	
Up2Us Landcare Alliance			
Ancona Valley landcare Group	30		
4 Delatite Landcare Group		55	
Howqua Valley Landcare group	31		
Bonnie Doon Landcare Group			
Upper Broken River Landcare Group	31		
Fords Creek Landcare Group			

Group	Memberships: 2010/11	2011/12	
South West Goulburn Landcare Network			
3 Glenaroua Land Management Group	42	42	
3 Nullavale Pyalong west Landcare Group		83	
4 Sunday Creek Dry Creek	37	77	▲
2 Willowmavin Landcare Group	18	20	▲
Reedy Creek Landcare Group	30		
Tallarook Landcare Group	30		
3 Dabyminga Catchment Cooperative		54	
3 Mitchelle and Surrounds Equine Landcare		15	
Broadford Land Management Group			
Hughes Creek Catchment Collaborative			
2 Whiteheads Creek Landcare Group		48	
Upper Goulburn Landcare Network			
3 Kinglake Landcare Group	22	30	▲
4 Merton Landcare Group	53	50	▼
Mt Pleasant Reserve Committee	12		
5 Strath Creek Landcare Group	64	130	▲
1 UT Creek Maintongoon Landcare Group	12	12	
4 Yea River Catchment Group	42	72	▲
4 Yea Wetlands Committee	70	60	▼
3 Molesworth Rail Park Committee	30	20	▼
5 Flowerdale Primary School Junior landcare		30	
4 Murrindindi Climate network		30	
3 Yellow Creek Dairy Creek Landcare group		14	
3 Kinglake Scouts Junior Landcare		40	
2 Friends of the Marysville Walks		12	
3 Home Creek Spring Creek Landcare group		23	
4 Burge Family Reserve Committee of Management		5	
Eildon Landcare			
South Cathedral Landcare			
5 King parrot Creek Environment Group		30	
Networks			
4 Broken Boosey CMN	560	680	▲
4 Whroo Goldfields CMN	130	180	▲
4 South West Goulburn landcare Network		10	
4 Broken Catchment Landcare Network – Gecko		1277	
4 Lower Goulburn CMN	60	100	▲
4 Up2Us Landcare	9	9	
5 Strathbogie Ranges CMN	12	135	▲
4 Hughes Creek Catchment Collaborative	255	200	▼
5 Upper Goulburn Landcare Network	24	9	▼
5 Goulburn Murray Landcare Network		35	

GROUP HEALTH:

- 5 Trail blazers
- 4 Rolling along smoothly
- 3 Moving forward
- 2 Struggling along with the same dedicated core
- 1 Just hanging on

TRAJECTORY:

- ▲ Increased Members
- ▼ Decreased Members



**GOULBURN
BROKEN**
CATCHMENT
MANAGEMENT
AUTHORITY

Terry Hubbard

Terry Hubbard
Chair
Upper Goulburn
Landcare Network

John Laing

John Laing
Chair
Goulburn Murray
Landcare Network

Michael Kaponica

Michael Kaponica
Chair
Hughes Creek Catchment
Collaborative

John Gilson

John Gilson
Chair
Up2Us Landcare Alliance

Paul Fleming

Paul Fleming
Chair
Southwest Goulburn
Landcare Network

Michael Spencer

Michael Spencer
President
Strathbogie Ranges CMN

Janice Mentiplay-Smith

Janice Mentiplay-Smith
Coordinator
Broken Boosey CMN &
Whroo Goldfields CMN

Lanie Pearce

Lanie Pearce
Coordinator
Lower Goulburn CMN

Robbie Hodges

Robbie Hodges
Chair
Longwood Plains CMN

Neil Devanny

Neil Devanny
Chair
Granite Creeks Project

Goulburn Broken Community Natural Resource Management Annual Report 2011-12

This is the fifth annual Goulburn Broken Community Natural Resource Management (NRM) report card. This report is completed by the Goulburn Broken CMA on behalf of the community, to describe all of the great work done by our volunteer based groups. The report provides stakeholders, investors and the NRM community an overview of its achievements over a 12 month period.

Response to the survey is voluntary, this year 55 of our 90 groups and 10 of our 12 networks contributed information.

In 2011-12 the community NRM groups of the GB CMA managed to leverage an additional \$1.8million into our catchment. This coupled with investment from the Department of Sustainability and Environment – Victorian Landcare Program of \$311k for on-ground works, has allowed our community groups and networks to deliver a substantial on-ground works and education program. Much of this investment has been possible thanks to the hard work of the network facilitators who work alongside our many volunteers to make community NRM a major success in the GB CMA.



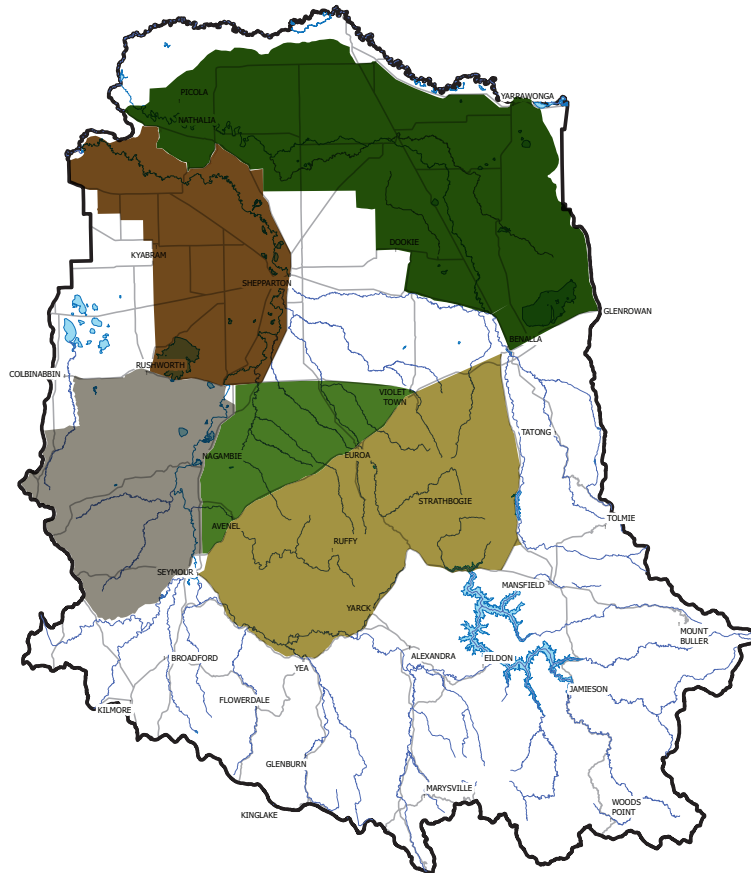
Our Landcare and Conservation Management Networks

Highlights

Landcare Networks:



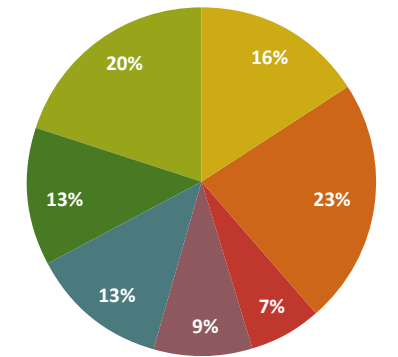
Conservation Management Networks:



Goulburn Murray Landcare Network Number of groups: 33 Responding groups: 12 Responding group members: 267 Highlight: Future Farming forum with 120 participants	Gecko CLaN Number of groups: 20 (Including Granite Creeks Project) Responding groups: 12 Responding group members: 625 Highlight: Continuation of the Pasture Cropping Project	Granite Creeks Project Number of groups: 6 Responding groups: 4 Responding group members: 220 Highlight: Integrated pest plant and animal project	Up2Us Landcare Alliance Number of groups: 6 Responding groups: 1 Responding group members: 55 Highlight: Reinvigorating the local schools environment Program	South West Goulburn Landcare Network Number of groups: 9 Responding groups: 6 Responding group members: 291 Highlight: Farm Blitz Project	Hughes Creek Catchment Collaborative Number of groups: 4 Responding groups: 1 Responding group members: 48 Highlight: Continuation of the Rabbit Ripping Project	Upper Goulburn Landcare Network Number of groups: 18 Responding groups: 15 Responding group members: 558 Highlight: Volunteer engagement through the Fire Recovery Project
Longwood Plains CMN Number of members: 20 Highlight: Formulating the CMN Committee	Broken Boosey CMN Number of members: 680 Highlight: Beating Weeds on the Broken Boosey project	Lower Goulburn CMN Number of members: 100 Highlight: Success of our community information sessions	Strathbogge Ranges CMN Number of members: 135 Highlight: 75ha of native vegetation protected and strong community involvement in group projects	Whroo Goldfields CMN Number of members: 180 Highlight: Yellow Gums and Goldfields project		

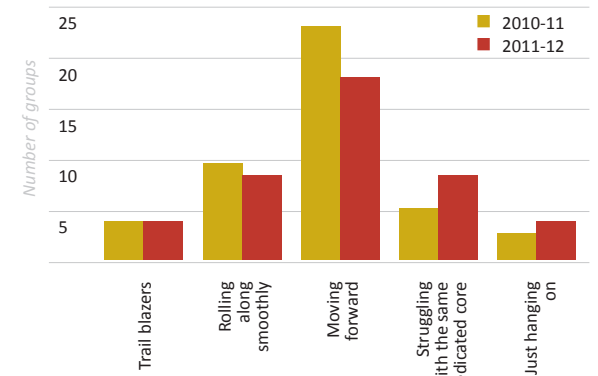
- Total Funding Leveraged in 2011/12 was \$1,800,000 (Note: some of these projects span several years)
- On-ground outputs for the year across all groups:
 - Revegetation: 392Ha
 - Weed Control: 568Ha
 - Rabbit Control: 216Ha
 - Fox Control: 30,541Ha
 - Next Box Building/Monitoring: 1,600
 - Fencing: 126Ha.
- Only 9 of the responding groups engaged with indigenous groups (5 Taunguraung, 1 Dja Dja Warrung, 3 Yorta Yorta).
- Over the 2011-12 year our community NRM groups engaged and delivered educational information to 5960 students.
- We produced 32 different newsletters and delivered these to 4552 households using a variety of methods on average 4 times a year.
- Our groups and networks met between once and fifteen times a year. On average they met on 6 occasions across the year, to plan and implement works and activities. 669 volunteers are involved in these meetings donating at least 1,500 hours to the cause.
- Our community NRM groups and networks have 4476 members. Membership is determined by various means however 63% of our groups have an annual membership fee which on average is \$20.
- Geographic operation of groups:
 - Rural: 82%
 - Urban Fringe: 10%
 - Urban: 5%
 - Other: 3%
- Group Governance:
 - Registered For GST: 59%
 - Incorporated: 83%
 - Public Liability Insurance: 90%

- Our Community NRM groups held 40 field days that attracted the attendance of 4847 individuals covering a wide variety of topics including:



Note: Many Field Days covered multiple topics.

Group Health



Network Health

